

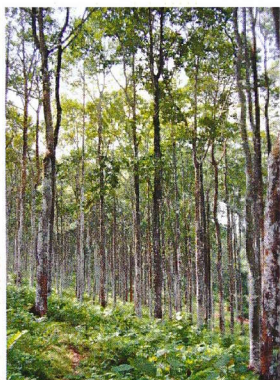
Institute of Forest Genetics and Tree Breeding Coimbatore

GENETIC RESOURCES OF FORESTRY SPECIES ASSEMBLED

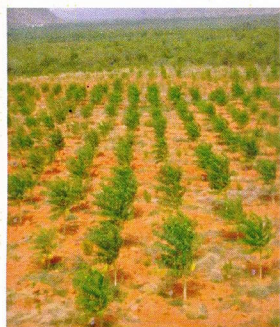
Assembling and evaluation of a wide range of germplasm has been a priority for IFGTB since its inception in 1988. It has created vast assets in terms of diversity of genetic resources for important forestry species for immediate breeding and long-term conservation needs. Despite the constraint of land availability, IFGTB has assembled forestry genetic resources like species, provenances, land races, families, clones and hybrids in more than 120 ha for nearly 20 species. In particular IFGTB possesses the largest genetic base for the most extensively planted tree crops in India viz. Acacias, Casuarinas and Eucalypts. The current emphasis is to strengthen the germplasm collection of native tree species and to include new promising indigenous species.



S. No.	Type of assemblage	Year	Area (Ha)	Location	Remarks
<i>Casuarina equisetifolia</i>					
1	SSO (IG)	1995	1	Puducherry	25 provenances
2	SSO (IG)	1998	2	Karunya	34 provenances
3	CSO	2000	1	Karunya	50 clones
4	SSO (IIG)	2008	2	TNPL	150 families
5	SSO (IIG)	2008	2	Tirupati	150 families
6	SSO (IIG)	2009	1	Chellancheri	150 families
7	CSO	2009	1	Marakkanam	24 clones
8	CSO	2010	1	Puducherry	24 clones
9	Clone Bank	1995+	0.5	IFGTB Campus	200+ clones
10	Species Trial	2000	0.6	Karunya	6 species
11	Hybrid Progeny Trial	2008	0.5 each	Panampally, SHAR, Veedur	30 hybrid progeny
<i>Casuarina junghuhniana</i>					
12	SSO (IG)	1996	2	Panampally	21 provenances
13	SSO (IG)	1996	2	Puducherry	21 provenances
14	HSO	2000	1	Karunya	6 provenances



S. No.	Type of assemblage	Year	Area (Ha)	Location	Remarks
15	SSO (IIG)	2009	2	Salem	90 families
16	SSO (IIG)	2009	2	Nellore	90 families
17	SSO (IIG)	2010	1	Veedur	90 families
18	SSO (IIG)	2010	2	Madurai	70 families
19	Clonal Tests	2009	1	TNPL, SPB	6 clones
20	Clonal Test	2010	1	Tirupati	35 clones
21	Clonal Test	2010	1	BU Campus	70 clones
22	Clone Bank	2001+	0.2	IFGTB Campus	110 clones
<i>Eucalyptus tereticornis</i>					
23	SSO (IG)	1997	2	Karunya	17 provenances
24	SSPA (IG)	1995	2	Pudukkottai	21 provenances
25	SSPA (IG)	1995	2	Panampally	21 provenances
<i>Eucalyptus camaldulensis</i>					
26	SSO (IG)	1996	2	Panampally	18 provenances
27	SSO (IG)	1996	2	Pudukkottai	18 provenances
28	SSO (IG)	1997	3	Sathyavedu	18 provenances
29	SSPA (IG)	1997	2	Pudukkottai	11 provenances
<i>Eucalyptus camaldulensis</i>					
26	SSO (IG)	1996	2	Panampally	18 provenances
27	SSO (IG)	1996	2	Pudukkottai	18 provenances
28	SSO (IG)	1997	3	Sathyavedu	18 provenances
29	SSPA (IG)	1997	2	Pudukkottai	11 provenances
30	Progeny trial	1995	0.5	Puducherry	50 progenies
31	Progeny trial	1995	0.5	Pudukkottai	50 progenies
32	Clonal trial	2000	2	Karunya	100 clones
33	Clonal trial	2000	1	Sathyavedu	80 clones
34	SSO (II G)	2009	2	Hyderabad	50 families
35	SSO (II G)	2009	2	Pudukkottai	50 families
36	SSO (II G)	2009	1	Thiyagadurgam	50 families





37	SSO (II G)	2009	1	Karaikudi	50 families
38	SSO (II G)	2009	1	Marakkanam	50 families
38	SSO (II G)	2009	2	Nellore	50 families
39	SSO (II G)	2010	3	Chennai	50 families
40	SSO (II G)	2010	2	Coimbatore	50 families
41	CSO	2009	2	Salem	18 clones
42	CSO	2009	2	Nellore	24 clones
43	CSO	2010	6	Nellore	50 clones
44	Progeny trial	2009	2	Athipalayam	50 progenies
45	VMG	2008	3	Bharathiar	50 clones
<i>Acacia auriculiformis</i>					
46	SSO (IG)	1997	2	Panampally and Sadivayal	PNG, QLD, NT & Thailand
47	SSO (IIG)	2006	3	Panampally and Manapet	132 families
48	SSO (IIG)	2007	1.2	Palode	132 families
49	SSO (IIG)	2007	1.2	Wadakkancherry	126 families
<i>Acacia mangium</i>					
50	SSO (IG)	1997	1	Nilambur	80 families
51	SSO (IG)	1998	1	Sadivayal	80 families
<i>Terminalia chebula</i>					
52	Germplasm assemblage	2008	0.5	Panampally	Selected trees
<i>Terminalia bellerica</i>					
53	Germplasm assemblage	1997	0.5	Panampally	Progenies of selected trees
<i>Artocarpus hirsutus</i>					
54	SPA	2002	10	Palode	Local seedlot
<i>Azadirachta indica</i>					
55	CSO	2001	2	Karunya	15 clones
56	CSO	2003	2	Maniachi	47 clones
<i>Ailanthus excelsa</i>					
57	Germplasm bank	2007	2	Tirupati	80 seed lots





S. No.	Type of assemblage	Year	Area (Ha)	Location	Remarks
58	Germplasm bank	2008	1.5	Kurumbapatti	64 seed lots
59	Germplasm bank	2009	1.2	Gudalur	48 seedlots
<i>Tamarindus indica</i>					
60	National germplasm bank	2009	1	Kurumbapatti	60 accessions
<i>Tectona grandis</i>					
61	Clonal trial	2009	0.5	Kurubampatty	20 clones
62	Clonal trial	2003	0.3	Nilambur	10 clones
63	Improved planting stock	2001	0.5	Karunya	Clones and CSO Seedlings
64	Improved planting Stock	2001	0.5	Vallanad	Clones and CSO Seedlings
65	VMG	2008	-	IFGTB campus	56 clones
66	Teak trial	2001	0.7	Panampally	Clones and Seedlings
67	CSO	1977 & 1996	4	Walayar	40 clones
68	Clone Bank	2003	0.3	IFGTB campus	50 clones
69	Clonal Trial	2003	0.5	Karunya	20 clones
Bamboos					
70	Bambusetum	2005	0.23	IFGTB	25 species and 90 accessions
71	Bamboo germplasm bank	2011	10	IFGTB field station, Kurichi	37 species, 125 accessions
Botanical Garden		Species assemblage since 1971		IFGTB of trees, climbers,	Includes 302 species herbs, shrubs and orchids

In addition to these species, germplasm of many emerging indigenous species like *Melia dubia*, *Gmelina arborea* *Anthocephalous cadamba* and medicinal plants are being assembled for genetic improvement and conservation purposes.

For further information, contact: Director, Institute of Forest Genetics and Tree Breeding, PB 1061, Coimbatore 641 002, Tamil Nadu. Phone: 0422 – 2484100; Fax: 0422-2430549; email: dir_ifgtb@icfre.org.